

# CHAMPION SPORTS FLEX

Introducing our line of recycled rubber matting available to you in 3 formats to best suit your specific installation needs. This matting offers a superior life cycle, cost savings, and is cosmetically appealing to your facility.

- Sound and shock absorbent
- Easy to maintain, damp mop and let dry
- Choice of Tile, Interlocking Tile, or Roll

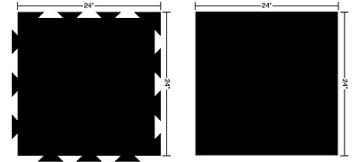


**Applications:** Weight rooms, fitness centers, ice rinks, golf courses, locker rooms, stadiums, therapy centers, day care and more

**Made of:** Recycled tire rubber; polymerically bound

**Size / Thickness:**

2'x2' Tile/ Interlocking Tile 3/8" Thick  
4'x50' Roll 1/4", 3/8", 1/2" Thick



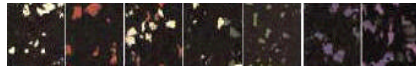
**Design:** Choice of roll, tile, or interlocking tile format; black background with colored flecks



**Installation:** Tile and Roll require adhesive; Interlocking tile is just connected together without adhesive. Installation instructions available upon request.

**Colors:** (listed in order of appearance; request sample for true color representation)

White, Red, Red/White, Green/White, Green, Blue, Blue/Green



**Technical Data:**

- Density: ASTM D3676 68.3 lbs/cubic foot
- Hardness: ASTM D2240 Shore A65 +/- 5
- Slip Resistance: ASTM D C 1028 Friction Coefficient .84-.090
- Abrasion: ASTM D4060 2,000 cycles taber abrader 1 kg .329-.35g loss
- Flammability: ASTM 2859 Pill Test, excellent value of 3.6 (passes Class II fire requirements)
- Acoustics: Rates Superior
- Chemicals: Resistant to most acids and chlorine
- R-Factor: R-8 Johnson unions measurable (?) in thickness (Roll only)
- VOC's: No measurable units