

# CHAMPION SPORTS TILE

The long time favored product for athletic and club facilities. It's interlocking design reduces installation costs (no adhesive), and maintenance costs (individual tiles can be replaced without replacing an entire floor!) Beveled border pieces are available for transitional areas.



- High quality flooring takes abuse and is cut resistant
- "Water droplet" embossed surface for traction

**Applications:** Weight rooms, ice rinks, industrial floors, portable gyms, portable/temporary flooring, etc.

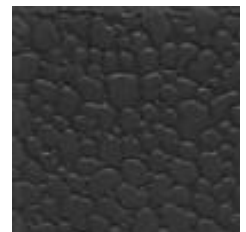
**Made of:** Rubber

**Thickness:** 7/16"

**Weight:** 3 lbs/square foot

**Size:** (tiles are slightly smaller than stated size- due to manufacturing process; order 5% more to avoid shortage)

Standard sizes: Center - 2'x2'  
Border - 1'x2'  
Corner - 1'x2'x2'



**Design:** Water droplet embossed surface, smooth underside. Alternating dual male/female tabs on each side prevent the tile from disconnecting.

**Installation:** Loose Lay

**Colors:** (listed in order of appearance; request sample for true color representation)

**Top Row:** Black, Royal Blue, Gray, Terra Cotta, Tan  
**Bottom Row:** Brown, Green, Maroon, Bright Red, Dusty Blue

