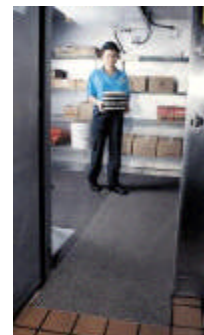


# GRIP ROCK-FREEZER

This non-slip matting promotes safety - to maintain employee performance, decrease injury related time off, workers compensation claims, and accident related litigation. Specifically designed to withstand cold temperatures found in coolers and freezers. A member of our Matrix Series safety matting.



- Made with crushed garnet & ceramic beads for secure footing
- Backing restricts creeping / Flexible at freezer temperatures
- Low profile eliminates tripping hazard and allows it to be placed under thresholds
- Resists fungal & bacterial growth

**Applications:** Freezer/Cooler - including under door for threshold coverage

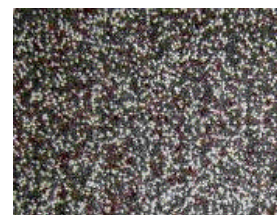
**Made of:** Top - White/Brown ceramic beads and crushed garnet  
Middle - Fiberglass  
Backing\* - Polyurethane  
\*(available unbacked for glue-down applications)

**Thickness:** 1/8"

**Size:** *(custom cut lengths available)*

Rolls - 3' x 40'

Mats - 3x5', 3x10', 3x15', 3x20', 3x25', 3x30'



**Design:** Highly textured surface

**Installation:** Loose Lay or Adhere down\*

\* Unbacked version allows mat to be glued down for a more permanent application. Commonly used in such situations as incline ramps, stair treads, marine docks, construction walkways, or even amusement ride walkways. The cementing technique is similar to that of linoleum sheets or tile.

**Color:** Brownish overall color / Speckled

**Testing:**

- Coefficient of Friction Test National Floor Safety Institute NFSI 101-A Test Method- SCOF value high than 0.6, therefore designated as high traction product.

- Bactericide-Fungicide Test ASTM G-21- No growth of bacteria or fungus during testing.

- Robinson Wheel Test ASTM C 627-84 - Test for long term life. Excellent results with negligible wear.

- Fire Ignition & Self Extinguishing Test US Navy 6411; Fed. Standard 501 - and tests aboard carrier USS Forrestal. Better than required for shipboard use.

- High Hardness - Grip Rock - Will cut glass- Mohs Scale 7.5 +.

- Ceramic Crush Strength- 10,000 p.s.i.

- Chemical Spill Tests - In an accelerated test chamber, over 2,000 tests were conducted with specific chemicals and conditions found in commercial kitchens and industrial environments. This mat has shown to be resistant to most industrial and commercial kitchen chemicals.

- Other- On the approved list of major hotel and restaurant chains.