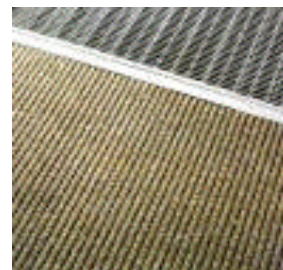


This carpet is amazing. Extremely durable-- it is even resistant to light fading, static, and fungus. Linear design helps scrape dirt and hide it until it can be cleaned.

- Non-skid backing holds carpet in place
- Wear, UV Fading, resistant
- Available in rolls or custom lengths



Applications: Entrances, Lobbies, Elevators

Made of: Blend of 18-240 dpf solution dyed UV stabilized olefin fiber (polypropylene) with a non-skid synthetic rubber backing.

Thickness: 3/8"

Weight: .6 lbs / square foot (*total weight*)
Face Fiber- 42 oz/sqyd | Primary Backing- 8.5 oz/sqyd
Backing- (natural & synthetic rubber) 23 oz/sqyd

Size: 78"x70' & 13'2"x70' rolls | Cut lengths available

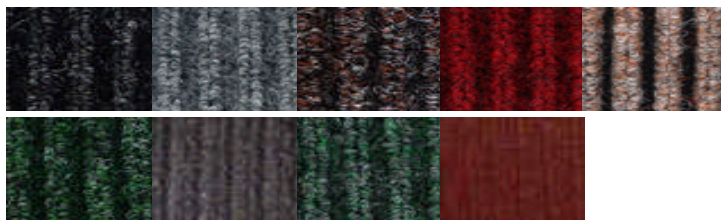
Design: Raised ribs run the length of the roll

Installation: Loose Lay, adhere down, or two-face tape

Colors: (*listed in order shown-- request sample for true color representation*)

Top Row: Charcoal, Silver, Chocolate, Red, Beige

Bottom Row: Pine, Blue, Dark Green, Maroon



Properties/Tests:

- **Colorfastness:** All colors show a rating of not less than "good" after exposure to 500 standard fading hours, testing as specified in method 5660 of FTMS CCC-T-1916
- **Abrasion Resistance:** Wear index in excess of 12,000 revolutions Taber Abrader, H-10 wheels, with weights of 1000 gms per wheel
- **Acoustical Properties:** Noise reduction coefficient rating NRC .25-.36 when tested per ASTM C423-68. Impact noise rating is +.14
- **Flammability:** product shall pass the requirements of DOC FF 1-70, FF 2-70, and ASTM E648, along with ASTM R662 smoke generation
- **Miscellaneous:** Resistant to carpet beetles, vermin (per ASTM D-1116-65T) and fungus (FTMS method 5762)

POLY RIB